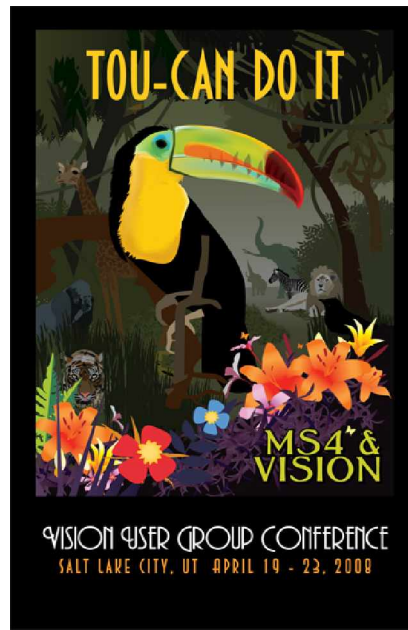


VISION USER GROUP NEWSLETTER



Highlights in this edition:

President's Message	Page 2
Editor's Message	Page 3
Spotlight	Page 4
Focus Group updates	Page 9
Board Members 2008	Page 15

To submit or inquire about an article, please contact:

John Gahagan

Manager, System Support

East Texas Medical Center Regional Healthcare System

903-596-3912

jgahagan@etmc.org

This publication is distributed quarterly

c/o Siemens

215 North Admiral Byrd Rd., Salt Lake City, Utah 84116

Website: <http://www.ms4vision.com>

Message from the President
--

Dear Vision User Group,

Are you hearing the call of the wild? You should be! You'll find this year's theme deep in the jungle, and we're calling all Vision users to catch the **jungle fever**. The board is very excited about this year's theme and we are hard at work planning a safari to remember. Please mark your calendars for April 21, 2008 and get ready for another GREAT Vision Conference.

The tagline this year is "**MS4 & Vision - Tou-Can Do It,**" and I believe it reflects the close relationship between the MedSeries4 (MS4) team and Vision. Both are equally dedicated to bringing you an HIS product that is a market leader. Additionally, these two groups collaborate and work hard to bring you a conference that provides excellent educational opportunities. You can enhance your education experience by planning to attend hands-on workshops that will be offered on Saturday and Sunday prior to the conference.

The "virtual track" for new users will be offered again this year. This track gives our new MS4 facilities an opportunity to attend a series of non-conflicting education sessions with subject material aimed at new users. We also plan to have the open slot on Tuesday morning that allows all attendees free time to visit with our Vision exhibitors. Our exhibitors offer a wide range of products that enhance the MedSeries4 product; you don't want to miss this opportunity to see what they have to offer.

So when you receive your Vision magnet this fall, hang it as a reminder to make your plans soon. The registration site and booklet will be available right after the first of the year. Watch our website at www.ms4vision.com for further information and links to the online registration.

"MS4 & Vision – Tou-Can Do It"

Sherri

President

Vision Board of Directors

Message from Your Editor

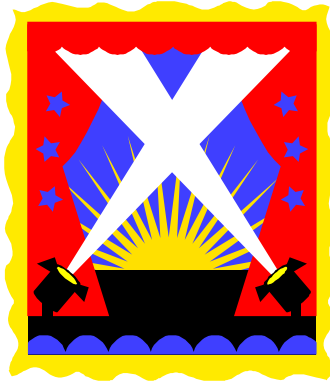


Just a short message from your new editor

I would like for everyone to please read our newest area called **Spotlight**. We have some good articles this edition. Thanks to all that have contributed to this November newsletter. Many times we hear and see things that would be great information to all.



Just a reminder that the Vision Conference next year will be April 19 - 23, 2008 at the Sheraton City Centre Hotel in Salt Lake City. The workshops will start on Saturday, April 19, 2008.



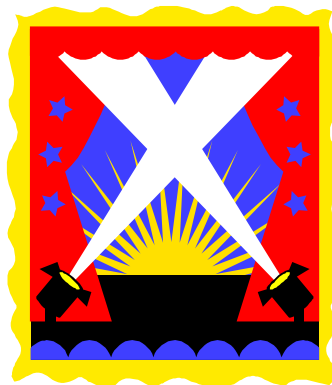
MS4 CUSTOMER SPOTLIGHTS



Kiowa County Hospital in Greensburg, KS, was destroyed by an F5 tornado in May. Kiowa is supported by Midwest Health Systems Data Center (MHSDC), which utilizes MedSeries4 to support 28 Critical Access Hospitals in Kansas and Nebraska. Because MHSDC hosts Kiowa's MS4 system in its data center, Kiowa was able to get up and running quickly in its temporary tent home (see picture below). Once the tents were in place, and communications were restored, Kiowa's business functions in the hospital were operational. During that time, Kiowa staff was able to travel to the Wichita Office of Great Plains Health Alliance to process payroll and accounts payable. Employees never missed any of their pay checks!

MHSDC provides information technology and service that helps small and rural hospitals achieve their community based mission. Several of MHSDC critical access hospitals are currently focused on installing Order Communications, Laboratory, and Clinical Documentation as core components of an Electronic Medical Record and clinical workflow applications.





MS4 CUSTOMER SPOTLIGHTS

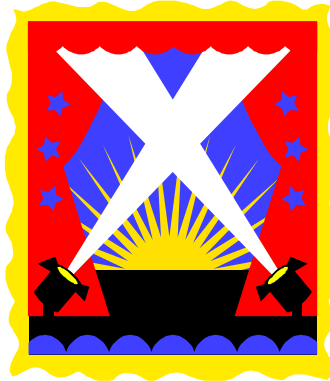


Day Kimball Hospital in Putnam, Connecticut came live on October 1 with a successful “Big Bang” go-live of MS4 AR/ADT, MS4 Enterprise Scheduling and OR Scheduling with preference cards, MIRA, Open Link, Pharmacy, and syngo Workflow and MS4 Clinical Suite. Day Kimball had already been live on MS4’s General Financials Suite. Physicians at Day Kimball are using Clinical Suite for results management capability.

Extensive planning, timely communications, and carefully managing expectations all attributed to a smooth go-live.

Day Kimball’s current focus is aligning the Soarian Portal with physician workflow. The Portal, a key to physician affinity at Day Kimball, will provide physicians with single sign on and easy access to MS4 Clinical Suite, PACS, and eventually Soarian HIM Completion Management.

A planned medication administration checking (MAK) install in 2008 will support Day Kimball’s patient safety initiatives. Also in 2008, the implementation of EDM and HIM will provide an enterprise document management solution that can support workflows in registration and the business office, provide documents within the clinical workflow, support medical records functionality, and enable online physician completion.



MS4 CUSTOMER SPOTLIGHTS

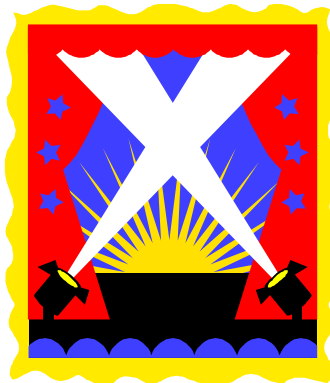


Caldwell Memorial Hospital, a 110 bed not-for-profit community hospital located in Lenoir, North Carolina, is moving forward with an aggressive strategic IT plan that aligns Caldwell's implementation plan with key business drivers of patient safety, high quality care, and community health.

This summer all nursing units went live on MS4 Clinical Suite Documentation – as part of Caldwell's vision of a "superior execution of IT at the bedside." MS4's flexibility made it possible for Caldwell to build content for key quality initiatives associated with MRSA screening, falls, skin care, and other areas where nursing protocols have the potential to reduce adverse events. Caldwell has also created documentation that supports best practices for pneumonia, CHF, nutritional screening for diabetes, and other clinical focus areas. Another goal of the implementation was to improve Caldwell's scores on CMS Core Measures by imbedding data necessary to calculate Core Measures into the assessment flow.

Caldwell's next clinical IT initiative will be medication administration checking (MAK) in the spring of 2008.

Caldwell is MS4's newest reference site partner and will host visits for both existing customers and new business prospects!



MS4 CUSTOMER SPOTLIGHTS

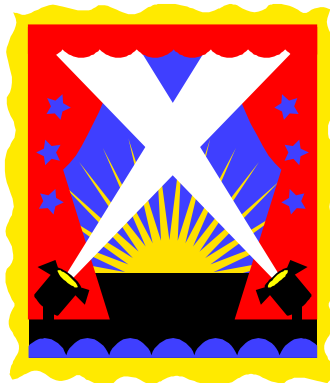


Wise Regional Health System, in Decatur, Texas, is moving forward with an aggressive clinical IT and EMR strategy. Wise migrated from Windows GUI modules to Clinical Suite applications including Order Communications, Results Management, and Nursing Assessments. Wise's rollout to nursing went smoothly and was followed quickly by physician acceptance and remote access for physicians.

New nursing documentation functionality, the new Clinical Suite Patient Summary Screen and support for Medication Reconciliation were drivers in Wise's decision to move forward with Clinical Suite.

Training went smoothly, and as of November 1, 30 physicians have been trained. They are very positive about the benefits of having instant access to their patients' information. Wise plans to deploy Clinical Suite WebConnect Mobile, which supports handheld devices for physicians.

Future plans include a projected rollout of medication administration checking (MAK) in the spring, and additional Clinical Suite modules including Medication Administration Record and Medication Ordering. Wise is also in the process of implementing the Electronic Health Record with Medical Records HIM (Health Information Management) modules.



MS4 CUSTOMER SPOTLIGHTS



Faith Regional Health System (FRHS) in Norfolk, Nebraska, is playing a pivotal role in the development of Telemedicine services in its region. In October, Faith was one of 78 recipients of grants for Distance Learning and Telemedicine. Faith will expand its telehealth system that provides remote monitoring capability for bedside ICU, EKG, and other diagnostic monitoring. With this technology, patients can be monitored and evaluated in their own communities by FRHS specialists such as cardiologists, nephrologists, psychiatrists, and infectious disease physicians. This telehealth initiative helps to make limited physician specialty resources more broadly available in rural northeast Nebraska.

An additional component of the FRHS telemedicine initiative is the ability to record education conferences for allied health professionals, physicians, patients, and consumers that can then be viewed in local, rural hospitals.

A user of MS4 clinical applications including Order Communications, Repository, Nursing Assessments and Care Plans, Siemens Pharmacy, as well as MedSeries4 Scheduling and OR Scheduling, FRHS was honored in May by VHA, Inc, a national healthcare alliance, for providing excellent care to surgical patients. FRHS received the award for preventing surgical complications and infections.

"We are one of only 87 hospitals to receive a VHA Leadership Award for surgical care, and the award validates the dedicated focus of our clinical staff and physicians to pursuing excellence in the care provided to our surgical patients," said Lisa Walters, Chief Nursing Officer at Faith Regional.

KEEPING YOU IN FOCUS

MIRA Focus Group

Vision 2008 -- Plans are underway! Several members of the MIRA Focus Group met on September 24 and 25 in Salt Lake City to plan session presentations for Vision 2008.

SESSION TOPICS INCLUDE:

- ü New MIRA releases and a Focus Group update
- ü CPT4 code flow and issue resolution (a joint session with AR)
- ü Government's impact on the revenue cycle (a joint session with DG/RE)
- ü Clinical Suite and how it impacts HIM
- ü Picking up the pieces after a disaster strikes
- ü MIRA for new attendees and/or new clients
- ü MIRA tips and tricks
- ü MIRA data extraction
- ü Unit consolidation

MEMBERSHIP:

The MIRA Focus Group continues to look for new members. Membership involvement consists of a monthly conference call and attendance at the Fall Meeting and annual Vision Conference. Members also have first hand knowledge of the upcoming fixes and enhancements for the MS4 MIRA and Privacy Administration applications, and have the opportunity to voice specific needs of your hospital, as well as the HIM industry, that will help MS4 continue to develop a better MIRA product. And, you will develop a great network of friends!

We have recently welcomed several new members:

- Charmaine Mockler from Brattleboro Memorial Hospital
- Debby Helmrich from Sutter Health
- Diane Muir from Mammoth Hospital
- Jean Rawles from Cheyenne Regional Medical Center
- Kathy Walsh from Billings Clinic
- Sarah Fuerhoff from Faith Regional Health Services

If you are interested in joining, please contact Gaylene Gladden at gaylene.gladden@siemens.com.

KEEPING YOU IN FOCUS

Patient Care Focus Group

The Patient Care Focus Group met this fall in Salt Lake for the annual fall meeting. We were excited to welcome several new members to the group. The new members include Marsha Adkins from Caldwell Memorial, Jennifer Graham from Wise Regional, Kim Barker from Women's Hospital, and Cheryl Rock from ValleyCare. In October Siemens announced that Liz Hansen is the new Siemens co-chair. She is currently working in Development and we are looking forward to her co-leadership responsibilities within the group.

We spent time working with MS4 Development on future products including improvements in the clinical pathways/protocols. The proposed changes are exciting and we are looking forward to seeing them fully developed and operational.

Many changes to the current clinical reporting will also be enhanced for a future release in early 2008. A task force has been meeting on a weekly basis with Development to offer suggestions/feedback to proposed changes. The task force will also be asked to contribute suggestions for care planning updates as the project progresses.

We brainstormed on Vision 2008 sessions for the Patient Care track. The group has created a great track for the conference and hope to cover as many topics as possible. Ideas for future sessions are always welcome; please feel free to contact any focus group member to let us know what type of programs/sessions you would like to see during the Vision Conference.

KEEPING YOU IN FOCUS

Financial Services Focus Group

In September 2007, the Financial Services Focus Group met and conducted their annual fall planning meeting. The group spent time planning and coordinating information about sessions and workshops for the 2007 Vision User Conference in the area of General Financials. We had an excellent turn out to this years fall meeting and great things have been planned.

The Financial Services Focus Group is excited to announce two new members, Lani Wong and Mert Ortaliza. These two new members bring knowledge and experience in the areas of Accounts Payable, General Ledger, and Materials Management.

Some recent enhancements to the general financial products are laser printing of vendor labels and check detail remittance advice, option to post GL batches from the JE management screen, and standardization of direct deposit electronic processes, as well as the quarterly regulatory updates.

The FSFG is continuously seeking additional members. We are looking for people with knowledge of the general financials applications (GL, MA, AP, PP/HR, FA, and Budgeting). We are especially in need of representatives for payroll and human resources.

For session/workshop ideas, membership information, or any other questions, please call or email:

<u>Client Co-chair</u>	<u>Siemens Co-chair</u>	<u>Siemens Co-chair</u>
Tricia Billington	Michael West	Masami Goldsberry
tbillington@etmc.org	Michael.West@siemens.com	Masami.Goldsberry@siemens.com
1-800-255-0877 Ext. 2637		

FSFG Recruitment

Gordon Miller

gmillier@abrazohealth.com

KEEPING YOU IN FOCUS

Patient Financial Focus Group**Client Co-Chair: Susan Mattos****Siemens Co-Chair: Diane Hummel**

The Patient Financial Focus Group (PFFG) conducts monthly conference calls to receive Board updates, review new clients, discuss release updates, to review SPECs with Siemens, discuss general issues, and plan for the Vision Conference.

We just returned from our fall meeting in Salt Lake City, planning for a great Vision 2008 conference! The Vision Board announced the theme as “Tou-Can Do It” and gave each focus group its own mascot. The PFFG loves our mascot and you can look for him to appear throughout our sessions at next year’s conference. We’re keeping him under wraps for now so we don’t ruin the surprise.

The PFFG has many helpful and informative sessions planned for next year’s conference. Here are just a few of them listed by theme and session name:

- | | |
|-------------------------------|---|
| Safari Guide to Census Events | - Understanding Census Event Transactions |
| The Circle of Life | - Patient Account Revenue Cycle |
| Cash is King | - Revenue Reclassification |
| Fun with Tarzan and Jane | - U4/H4 Troubleshooting |

As you can see, we’re really having fun with the jungle theme for Vision 2008! The PFFG always offers a wide variety of sessions and workshops for all user levels. We have beginner to advanced sessions available, so there’s something for everyone! In addition the Vision conference is a great time to network, ask questions, share ideas, and obtain useful information to help you with managing your accounts receivable! So make your plans today and we hope to see you at Vision 2008!

A fond farewell to Debbi Kloberdanz, Cheyenne Regional Medical Center, for her many years of dedication to our group – thank you for all your help and we will miss you! A big welcome to our newest PFFG members: Pam Waggener, Cheyenne Regional Medical Center and Jim Hillerman from Banner Health.

We are currently in search of new focus group members. If you are interested, please contact Susan Mattos to obtain an application form at MattosS@sutterhealth.org or call (916)978-8960.

KEEPING YOU IN FOCUS

Case Mix/Re Focus Group

Ronald Wensel, Client Co-Chairman wenselr@ah.org
 Mary Heckle, Siemens Co-Chairman mary.heckle@siemens.com

The fall planning session in Salt Lake City has just finished and the Case Mix/RE Focus Group is excited about the sessions planned for Vision 2008. Our presentations cover a wide variety of subject matter and the Case Mix/RE track has something for each level of user. For those wanting a refresher course or are new to the system, we have a “Back to Basics” session. This session will provide a starting point for RE functionality. It focuses on basic definitions, using RE files, and will give resources on where to look for answers to questions and solutions to challenges that may be encountered. A separate session has been created regarding Stop Loss and Package Terms. With all of Medicare’s changes we have created a session looking at how these changes affect RE and the revenue cycle and we have a session looking at how to set up a Medicare contract. Anyone interested in RE file dependencies and seeing where RE fits in the MedSeries4 system will be pleased with session R1. Another session will cover the RE Description Keys and the ASC/CPT/RVU Parm File and two sessions have been created with a focus on the Case Mix application.

Ever wonder why someone would want to be part of a focus group? We in the Case Mix/RE Focus Group think there are several advantages. Being on this focus group has given each of us a better understanding of the updates and new releases. We have a voice regarding the SPECS Siemens looks at for the DG/RE application and their priority. The networking has been invaluable and the ability to expand on our knowledge has made each of us more efficient to the organizations we work for. By working collaboratively we solve problems quicker, ask better questions, and know who to call and what resources are available. It has enhanced our understanding of the product and allowed us to excel.....and....Bruce from Alaska always brings fresh salmon to the fall planning meeting!

Today’s “tips and tricks”

19.26 Predefined Example ST13 – found in Appendix D of the Reimbursement Management Manual

Description: Reimbursement equals DRG reimbursement plus xxx percent of charges in excess of xxx dollars.

Action	Variable 1	Operation	Variable 2	Result
CALC	30000.00			THRSH
IF	TCHG	GT		THRSH
THEN	TCHG	-	THRSH	
EXCSS				
AND	EXCSS	*	.70	
ADDON				
AND	CRMB	+	ADDON	NEW

Respectfully submitted by,
 Heather Lattuada
 CMIX/RE Focus Group Member

KEEPING YOU IN FOCUS

Technical Focus Group

The Technical Focus Group would like to share an update about the Siemens OPENLink™ Email Adapter.

As of version 23.5-4, the Siemens OPENLink E-mail Adapter is installed with the Siemens OPENLink product. This utility allows for sending of emails based on transaction content from Siemens OPENLink to an individual email address or addresses, or to an email distribution list. Through a combination of Siemens OPENlink Toolkit definitions and Adapter configuration, Siemens OPENLink now provides a flexible solution that can alert staff to different events or conditions as data flows through the Engine.

One example of a real-world use for this adapter is to alert physicians or nurses to critical laboratory results. Instead of having to rely solely upon a (possibly error-prone) manual process of communicating that such results have been reported, Siemens OPENLink can be configured to recognize a critical result as the data flows through the engine and route an email directly to any email-capable device to enhance workflow and improve patient care. Another example is triggering an email to the housekeeping staff based upon a discharge transaction being processed by Siemens OPENLink. By notifying staff immediately upon a discharge that there is a bed to be cleaned, the amount of time the bed is unusable can be reduced. Yet another example is triggering an email to a family doctor as soon as a patient is registered for an Emergency Room visit. The email could prompt the physician to call the hospital to obtain more details even before the patient has been examined and the family doctor notified by phone call.

Refer to the [Siemens_OPENLink_Version_23.5_Integration_Engine_Manual](#) for more information regarding setup and use of the E-mail Adapter.

NOTE: Currently, the Email Adapter does not support encryption of emails. Therefore, HIPAA rules and other legal requirements should be kept in mind when using the Adapter.

**VISION BOARD OF DIRECTORS
2007– 2008**

<p>SHERRI WARD (2009) PRESIDENT IT Manager Core Applications Cheyenne Regional Medical Center 214 E. 23rd Street Cheyenne, WY 82001 Work: (307) 633-7164 Fax: (307) 633-7181 sherri.ward@crmcwy.org</p>	<p>JONATHAN FARINA (2008) PAST PRESIDENT Director, Information Services Brattleboro Memorial Hospital 17 Belmont Ave Brattleboro, VT 05301 Work: (802) 257-8376 jfarina@bmhvt.org</p>
<p>KAREN BOWLING (2010) PRESIDENT ELECT Director of Clinical Information Systems St. Joseph Hospital 360 Broadway Bangor, ME 04401 Work:(207) 907-1268 Fax:(207) 262-1797 Karen.bowling@sjhhealth.com</p>	<p>BOB ADAMS (2008) Information Services Manager Bay Area Hospital 1775 Thompson Road Coos Bay, OR 97420 Work: (541) 269-8010 Fax: (541) 269-8119 badams@bayareahospital.org</p>
<p>SARAH LONGEST (2008) CIO Grenada Lake Medical Center 960 Avent Dr. Grenada, MS 38901-5094 Work:(662)227-7281 Fax:(662) 227-7534 Cell:(662) 983-5581 Sarah.longest@glmcc.net</p>	<p>JANE ANN BRIDGES (2009) TREASURER CFO Nacogdoches Memorial Hospital ATTN: Jane Ann Bridges 1204 Mound St. Nacogdoches, TX 75961 Work: (936) 568-8525 Fax: (936) 568-8588 bridgesj@nacmem.org</p>
<p>CHUCK SCRONCE(2010) VP/CNE Caldwell Memorial Hospital 321 Mulberry Street Lenoir, NC 28645 Work: (828) 757-5225 Fax: (828) 757-5512 cscronce@caldwell-mem.org</p>	<p>JULIE TISDALE MS4 LIAISON Siemens Medical Solutions Health Services 215 N. Admiral Byrd Rd. Salt Lake City, UT 84116 Work: (801) 539-4753 Fax: (801) 533-8004 Julie.Tisdale@siemens.com</p>
<p>KENNETH ABENDSHIEN (2010) SECRETARY Director of Information Systems 103 East 27th Street, Suite A Hays, KS 67601 Work: (785) 628-6188 kabendshien@mhsdc.com</p>	<p>JOHN GAHAGAN (2010) Manager – Systems Support Information Technology East Texas Medical Center 801 Clinic Drive Tyler, TX 75701 Work: (903) 596-3912 Fax: (903) 596-3940 JGAHAGAN@ETMC.ORG</p>
<p>ANN LAZERUS MS4 General Manager Siemens Medical Solutions Health Services 215 N. Admiral Byrd Rd. SLC, UT 84116 Work: (801) 539-4981 Fax: (802) 533-8004 A.Lazerus@siemens.com</p>	